

# Board of Parks & Recreation Commissioners Superintendent's Report

---

AP Diaz, Superintendent  
April 25, 2024



**Seattle**  
Parks & Recreation

Healthy People, Thriving Environment, Vibrant Community

#SeattleShines



# Department Update

- Spring Bucket List
- Earth Month
- Denny Blaine meeting/guidelines
- Seeking names for 2 new parks

 **Seattle**  
Parks & Recreation

*Help name  
new parks!*

"South Park Plaza Site" "North Rainier Landbank Site"

 See the cherry blossoms bloom

 Enjoy a picnic with friends

 See herons nesting at Commodore Park

 Enjoy the daffodils in bloom

 Ladybug Festival at Garfield CC

 Take flower pics at the Arboretum

 Take a hike at Discovery Park

 Bike to a Spring Farmers Market

 Enjoy a walk in the rain

 See buskers at Occidental Square

 Buy native plants at a spring plant sale

 Plant a tree on Earth Day

 Drink coffee with a great park view

 Explore the tidepools at Constellation Park

*Spring  
Bucket List*



# Parks & Recreational Services: Parks and Environment

- Park Rangers training
- Trails Crew improves path at Discovery Park
- Tree pruning at Seacrest



Park Ranger training at Camp Long



Trail restoration work at Discovery Park



Pruning: Before and After photos in Seacrest Park



# Parks & Recreational Services: Parks and Environment

## Jefferson Greenhouse

- Propagates 60,000 plants a year
- Provides plants for parks, greenspaces
- Supports urban food programs, food banks





# Parks & Recreational Services: Recreation

- Summer Camp registration
- Oshun Swim School
- Discovery Park Gift Shop



Merchandise at the Discovery Park Gift Shop

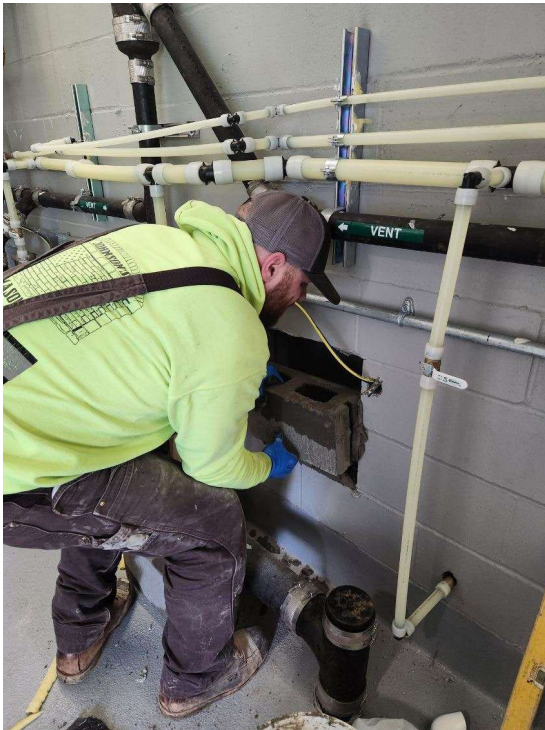




# Parks & Recreational Services: Facilities

Recent work by  
Facilities crews at

- Brighton Park
- Othello Park
- Rainier Beach Pool



Brighton Park restroom



Othello Park restrooms



Rainier Beach Pool



# Parks & Recreational Services: Planning and Capital Development

- Ribbon cuttings galore!
- Lake City Community Center / housing project
- Victor Steinbrueck Park totem poles
- Park CommUNITY Fund
- 'Pump Track' project at I-5 Colonnade Park



Ballard Commons  
Park ribbon cutting



Green Lake Community Boathouse opening – photo by Alex Grummer

# Policy & Finance

- 2023 Impact Report
- Parks and Open Space Plan at City Council
- Scholarship applicants increase
- Underwater cleanup at Seacrest Pier



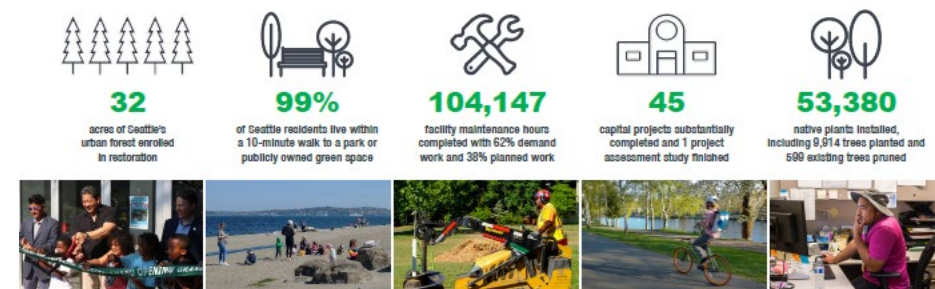
Clean up underneath  
Seacrest Pier in West Seattle



## HEALTHY PEOPLE



## THRIVING ENVIRONMENT



## VIBRANT COMMUNITY





# Upcoming Events

- April 30: Fund the Fun Breakfast benefits Swim Seattle!
- May 4, 9: Wildlife hikes
- May 18: One Seattle Day of Service





# Thank you!



**Seattle**  
Parks & Recreation

Healthy People, Thriving Environment, Vibrant Community



# 2024 SPR Pickleball and Tennis Vision

---

Board of Parks and Recreation Commissioners

Jonathan Garner, Sr. Planner | April 25, 2024

Andy Sheffer, Deputy Superintendent



**Seattle**  
Parks & Recreation

Healthy People, Thriving Environment, Vibrant Community



**#SeattleShines**



# BACKGROUND

## 2017 PILOT STUDY

- Added courts at 7 locations
- 24 new courts

## 2022 OUTDOOR PB STUDY

- Further recommendations of 2019 Pilot Report
- Respond to calls for action from pickleball

## 2024 VISION FORWARD:

- Identify and select hubs
- Measure usage
- Communicate/ Engage

START

## 2019 PILOT REPORT

- Expand dual striping
- Investigate locations for dedicated pickleball
- Refine dual striping standard

## 2023 STUDY OUTCOMES:

- MPD planning begins for dedicated pickleball
- On-going programs
- Lincoln Park

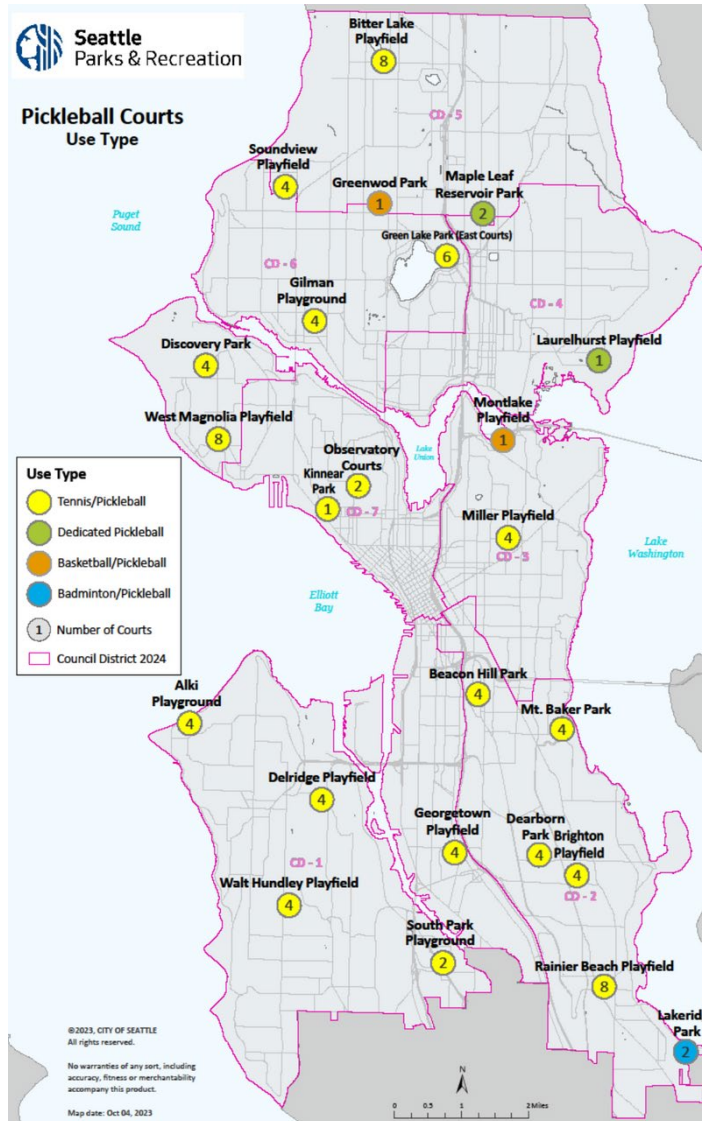
Pickleball began in 1965 at the summer home of Joel Pritchard, WA Lt. Gov. from 1989-1997.



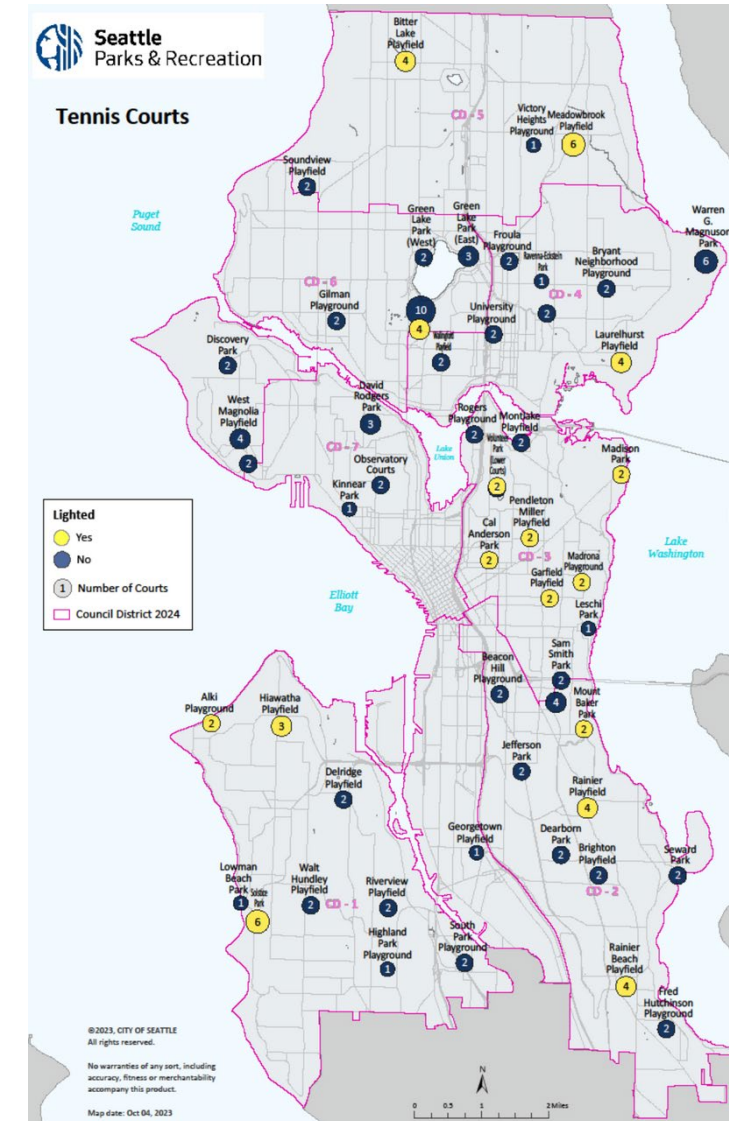
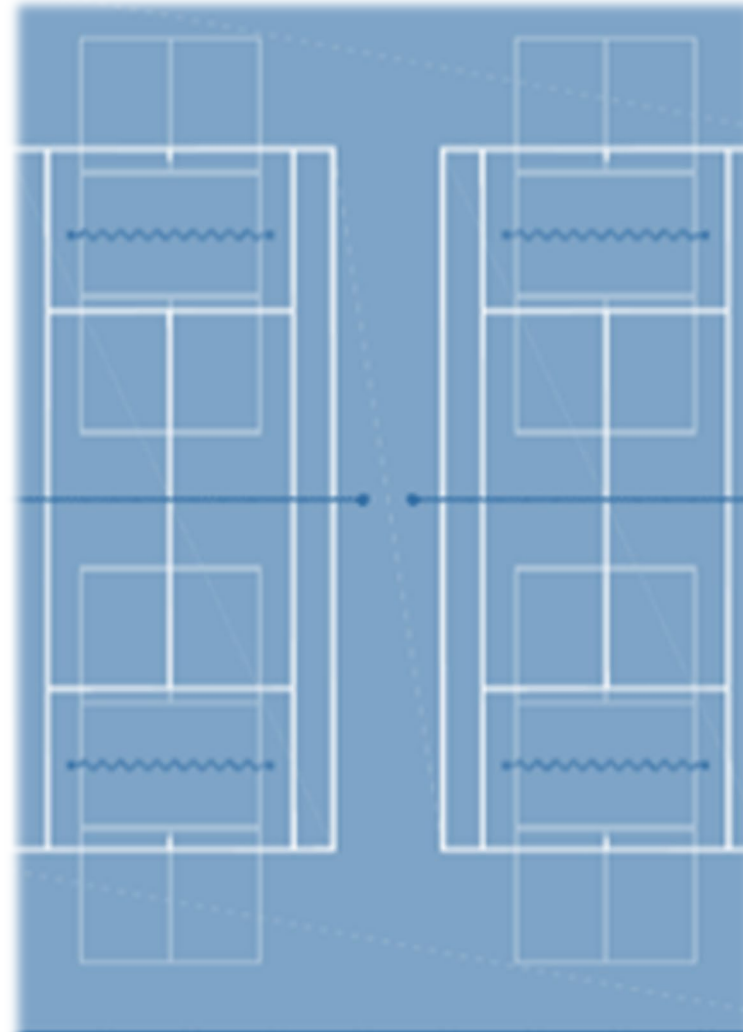
#SeattleShines



# DISTRIBUTION



Total Pickleball: 90 (87 shared w/ Tennis, Basketball, Badminton)  
Dedicated Pickleball: 3



Total Tennis courts: 135  
Dedicated Tennis: 52



#SeattleShines

# Seattle Parks and Recreation acknowledges a need for dedicated court time for Tennis and Pickleball.



## Passion for Tennis

Importance of discipline and developing healthy fitness habits.



## Growth of Pickleball

Pickleball is Seattle's fastest growing sport.



## Social Communities

Players want to build social connections, seek community and a sense of unity and support. Therefore - many people congregate at courts.

Pickleball is a sport for all ages that combines elements of tennis, badminton and ping pong.



**#SeattleShines**



# FUN FACT

Serena Williams is a professional American tennis player who has won 23 Grand Slam singles titles, the most by any player in the Open Era. She took an interest in pickleball in 2022 and has since competed in several pro tournaments. Though new to the sport, her athleticism and competitive spirit have allowed her to excel.



In 1995, at the age of 14, Serena became a professional tennis player and began competing.



**#SeattleShines**

# 2024 VISION FORWARD

## Capacity

Identify Tennis +  
Pickleball Hubs

Forward capital projects

Court improvements

## Utilization

Reservations for specific  
use of courts

Reduce noise impacts

Partner to increase  
number of courts

## Communication

Develop Court Council

Meet quarterly

Online engagement hub



**#SeattleShines**



# CAPACITY



## Designate Pickleball and Tennis Hubs

- Tennis  
Lower Woodland (North)  
Amy Yee (South)
- Pickleball  
East Green lake (North)  
Identify South Location



## Court Improvement

- Resurfacing 12 Tennis courts in 2024
- High density court structure
- "Shared Distinct Use" pilot



## Forward Capital Projects

- Research Funding Plan for Amy Yee Indoor Expansion
- Magnuson 8-10 PB Courts
- Georgetown 2-3 PB Courts

Blanchet H.S will continue to play tennis at East Green Lake as they are part of the community.



**#SeattleShines**

# HUB CRITERIA



## Court Hubs

- Sport specific facilities
- Players can be part of a community
- Facility may be indoor and/or outdoor
- Distributed across the city
- Desirable locations to ensure utilization



## Criteria

- Minimum eight courts
- Lighting
- Proximity to transit and/or parking
- Amenities to support facility
- Safe "waiting" area
- Circulation for bystanders
- Accessible for players of all levels and abilities



## Layout

- High-density court structure
- USTA or USPA sanctioned
- Space consideration for "queuing"

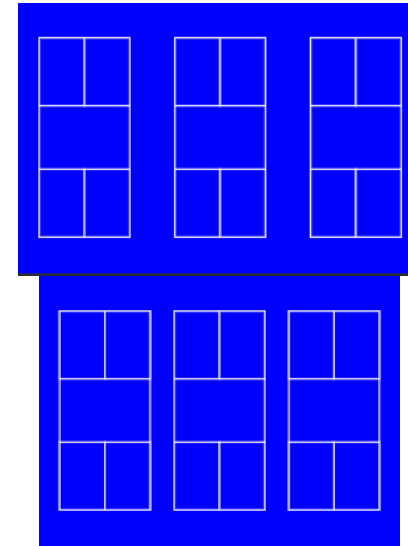
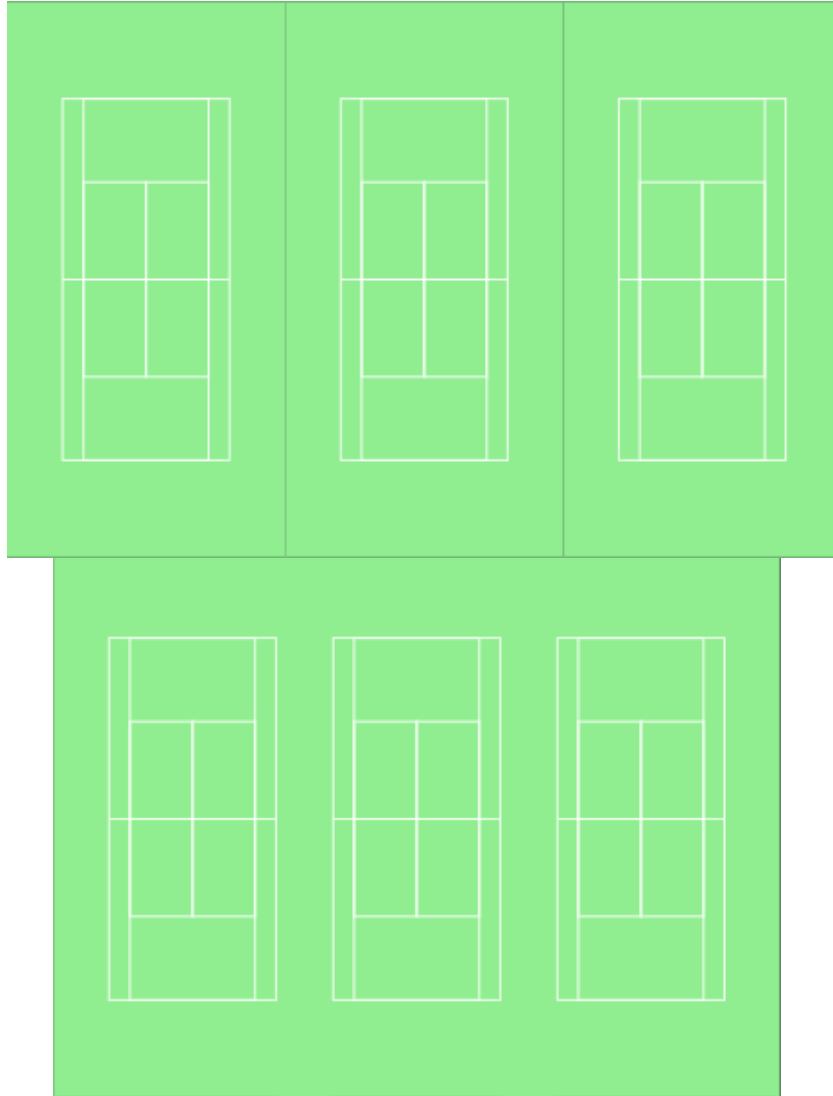
The first version of tennis was lawn tennis, and the courts were in an hourglass shape.



**#SeattleShines**



# HIGH DENSITY COURT STRUCTURE

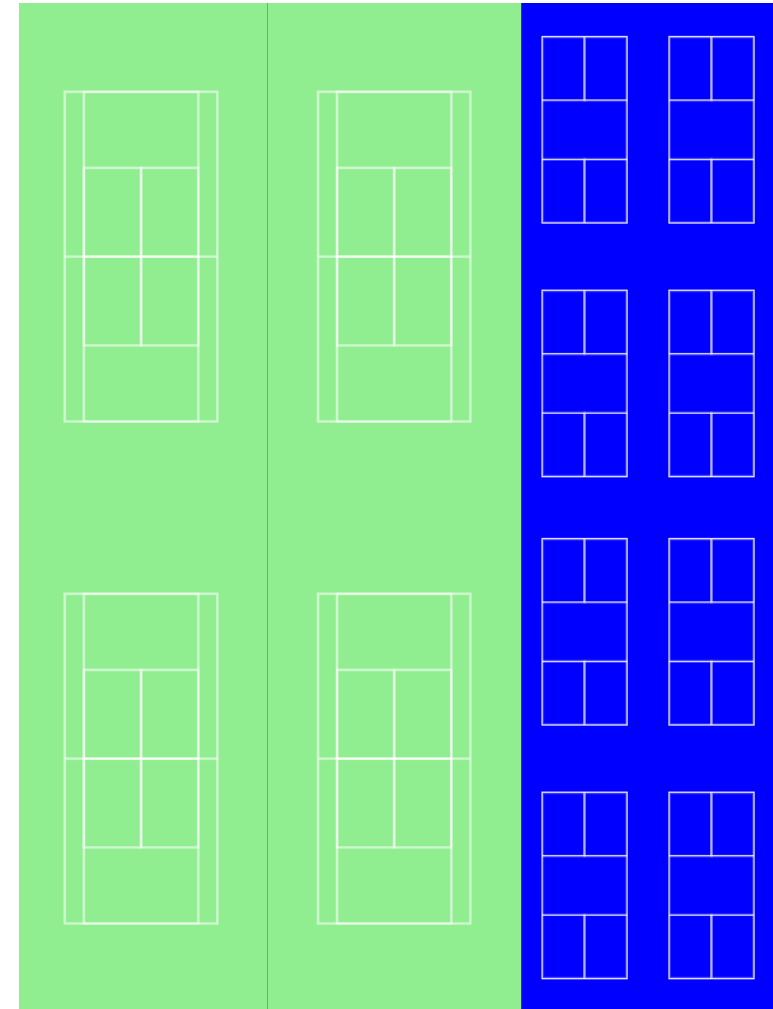
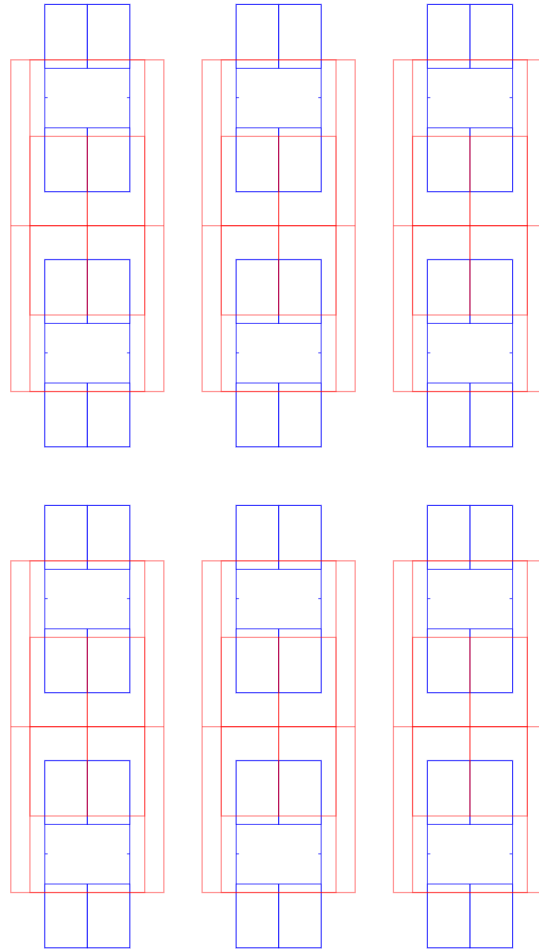
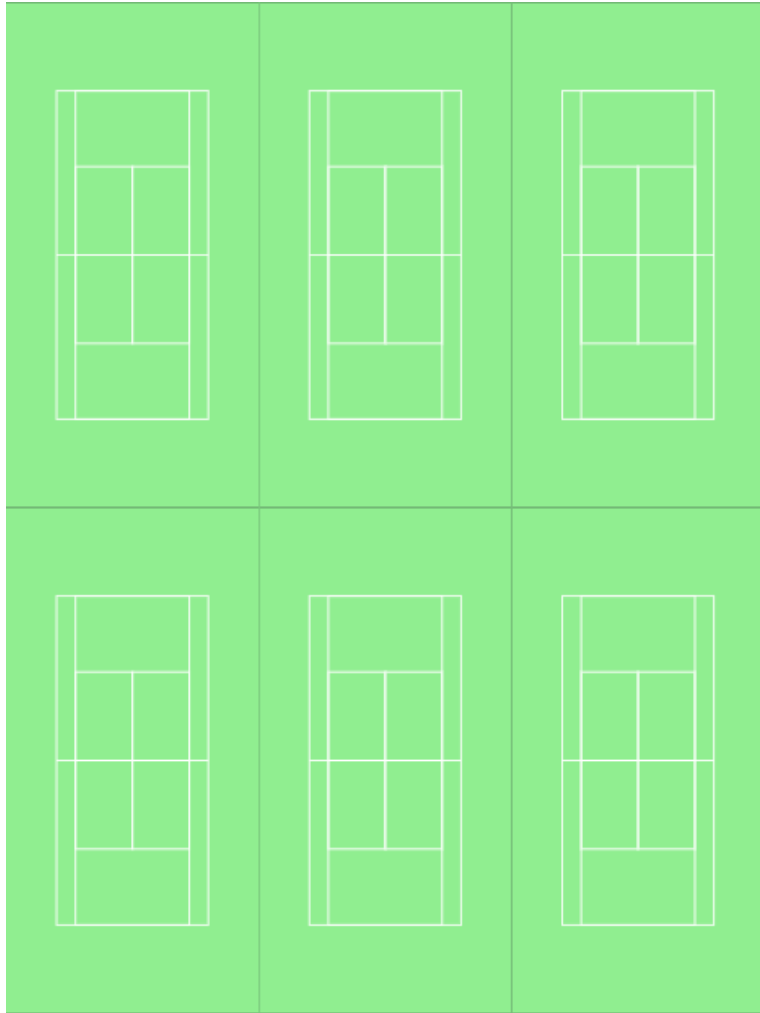


In Hawaii, pickleball is known as pukaball because the word *puka* means "hole" in Hawaiian.



**#SeattleShines**

# SHARED DISTINCT USE COURT STRUCTURE



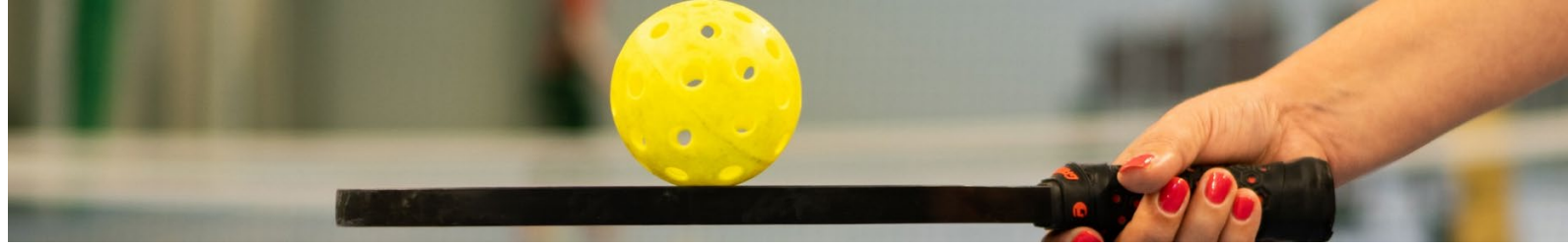
In Tennis, players are not allowed to use the ball to wipe off sweat.



#SeattleShines



# UTILIZATION



## Pilot Dedicated Courts

- Dedicated Tennis and Pickleball Courts at single facilities separately
- Pickleball
  - East Green lake
  - Identify South Location
- Tennis
  - Lower Woodland
  - Amy Yee Outdoor



## Scheduling

- Revise reservation structure
- Monitor usage



## Pickleball Noise Reduction

- Piloting Noise Reduction Paddles developed w/ UW
- Collaborate w/ United States Pickleball Assoc. to develop standard
- Designate specific courts for noise reduction paddles only

Dink, Volley, Double Bounce Rule, Fault, The Kitchen, Serve!



**#SeattleShines**

# COMMUNICATION



## Sep-up Court Council

- Develop Charter
- Include Stakeholders
- Meet Quarterly
- Advance Vision Forward



## Set-up Interactive Website

- CitizenLab
- Survey users
- Collect and respond to questions and comments



## Court Signage

- Shared Facility "Code of Conduct"
- QR Codes to connect to Interactive Website
- Host Meet-ups and other community events

Understand  
Equipment

Learn the  
Rules

Practice Your  
Strokes

You will find a  
partner

Start Slow



**#SeattleShines**



# OTHER TOPICS



- SPR inviting The Pro Tour of Pickleball (PPA) to host annual event at Amy Yee Tennis Center.
- The SMPA has not been able to host a tournament in Seattle due to lack of number of courts in one location.
- SPR needs a standard for colors used on dual-striped courts
- Inter-agency partnerships; 5th Ave & Taylor courts (SDOT), JUA (SPS)
- Private investment and/or public-private partnerships
- Partnerships with local educational institutions (SPS, UW, Seattle U)
- Partnership with nearby jurisdictions

The longest tennis match in history lasted an astonishing 11 hours and 5 minutes.

# QUESTIONS?



**#SeattleShines**



# THANK YOU!!

**Jonathan Garner**

Sr. Planning & Development Specialist

C: 206.619.9725

E: [Jonathan.Garner@Seattle.gov](mailto:Jonathan.Garner@Seattle.gov)